

# AXESS® PRO 1505 SERIES



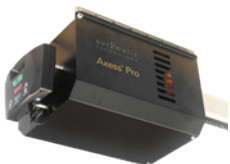
## INDUSTRIAL OVERHEAD OPENER

### Smaller. Slimmer. Smarter.

The Axess® Pro 1505 upholds Automatic Technology's reputation for reliability, ease of use and integrated technology. Its power-packed design is the perfect choice for most limited-space applications.

The Axess® Pro 1505 opener is a powerful, heavy-duty opener optimally designed to operate high use sectional doors up to 25m<sup>2</sup>. It comes with Automatic Technology's clever Logic Control System featuring LCD screen, customisable menu system and service indicator and can store up to 511 transmitter codes. The SureTrack Absolute Positioning Encoder tracks the precise location of the door at all times through its travel.

#### WHAT'S INCLUDED:



Opener



2x Remote Control Transmitters



Logic Console



Wired Safety Beams

#### AT A GLANCE:

##### LOGIC CONTROL SYSTEM WITH LCD SCREEN

Customisable menu system, service indicator, 24-hour clock, stores 511 TrioCode™ transmitter codes and integrates additional inputs.

##### MAGNETIC AUTOMATIC LIMIT POSITION SYSTEM (M-ALPS)

Magnetic sensing system for easy set up and maintaining accurate limits as in the Axess® Pro series

##### WIRELESS SAFETY PE BEAMS

Wireless Safety Beams available for quicker installation. Wired Safety Beams also available.

##### QUIET, HEAVY DUTY GEARBOX

Quiet, heavy duty gearbox. Soft start and soft stop operation.

##### MOTOR OVERLOAD DETECTION

Adjustable overload detection to protect door and opener if a physical obstruction occurs.

##### INVERTER DRIVEN 3-PHASE MOTOR

Delivers soft start and stop operation with speed control and easy installation.

# TECHNICAL SPECIFICATIONS



## AXESS® PRO - 1505 SERIES

<b>Dimensions</b>	ATA Part #	62670	62669
	Track	4 metre	6 metre
	Max Door Height	3.5 metre	5.5 metre
	Max Door Area	25m <sup>2</sup>	25m <sup>2</sup>
<b>Power</b>	Input Voltage	230Va.c. 50Hz	
	Standby Power	2.8W	
	Motor Type	Induction	
	Motor Power	373W, 3-phase	
	Rated Duty Cycle	60%	
	Drive Unit Weight	23kg	
	Typical Travel Speed	Variable via inverter	
<b>Transmitter System</b>	Receiver/Transmitter Frequency	Multi-frequency UHF FM TrioCode™128	
	Coding System	Code hopping	
	Transmitter Type	TrioCode™128	
	Transmitter Capacity (x 4-button registers)	511	
<b>Additional Features</b>	Safety Beam Compatibility	3 x Wired or Wireless Safety PE Beams (L2 console included)	
	Safety Beam Inputs	3	
	LCD Screen	Yes	
<b>Warranty*</b>	2 years / 5,000 cycles		

### ALSO AVAILABLE:

#### LOCKABLE CONTROL BOX

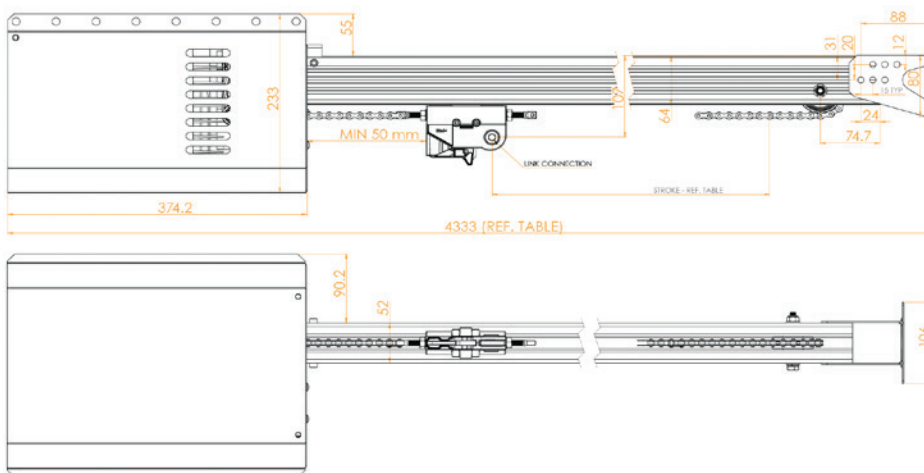
The optional lockable control box mounts the logic or manual console inside a sturdy enclosure.

The enclosure features separate Open, Close and Emergency Stop buttons for door control.

The Open and Close buttons can be enabled and disabled by the keyed lockout with positions for Auto, Manual and Off operation.



### KEY DIMENSIONS:



For more product information, visit [www.automatictechnology.com/au](http://www.automatictechnology.com/au)

\* For full terms and conditions of our warranty, please go to [www.automatictechnology.com/au](http://www.automatictechnology.com/au). Our warranty is in addition to any consumer guarantees that may apply under the Australian Consumer Law. © 2025 Automatic Technology (Australia) Pty Ltd. All rights reserved. The Automatic Technology logos, TrioCode & Axess are registered trademarks. In an ongoing commitment to product quality, the specifications may change from time to time. Date: August 2025. Automatic Technology (Australia) Pty Ltd ABN 11 007 125 368, [www.automatictechnology.com/au](http://www.automatictechnology.com/au), 1300 133 944.

