

Swing LR 500

RURAL GATE OPENER WITH SOLAR KIT - MRGLSK-SP



SUITABLE FOR SINGLE SWING GATES UP TO 5 METRES



SWING GATE OPENER WITH SOLAR KIT

KEY FEATURES

SUITABLE FOR RURAL SWING GATES

Suited for Single Swing Gates up to 5 metres.

INCLUDES SOLAR KIT

Operate without mains power. Kit includes solar panel, batteries, enclosure, mounting kit, cables and mains charger.

EASY INSTALLATION

Plug & Play connections for fast and easy installation. Brackets for farm gates included.



Compliant to Australian and New Zealand Standard AS/NZS 60335.2.103



QUIET & RELIABLE



SOLAR POWER KIT INCLUDED operate without mains power.



3-YEAR WARRANTY*



IP44 WEATHER RESISTANT ingress protection IP44 suitable for outdoor installation.



QUIET DC MOTOR eliminates noise and vibrations, providing smooth operation.



120° WIDE OPENING ANGLE



SINGLE SWING GATES UP TO 5 METRES

SAFE & SECURE



SECURITY+ 2.0* sends a new code with every remote click.



PREMIUM AUTOMATIC SAFETY REVERSE function will allow your gate to stop and reverse automatically if obstructed in opening or closing.



TIMER-TO-CLOSE automatically closes the gate after a pre-set amount of time.²



IMPROVED TRANSMITTER RANGE has up to 18% better range meaning you can start opening your gate sooner.³



AUTOMATIC FORCE SENSING monitors and adjusts the force needed to open your gate with each operation.



DISENGAGEMENT MECHANISM allows you to manually open the gate whenever needed.

SMART



MYQ CAPABLE TECHNOLOGY lets users create schedules, monitor, receive alerts and control the gate opener away from home.¹



LCD DISPLAY for fast and intuitive programming setup.



SOFT-START AND SOFT-STOP for smooth operation.



PEDESTRIAN MODE allows for customised gate opening access.

ACCESSORIES INCLUDED



FOUR BUTTON REMOTE CONTROLS

Premium remotes to control up to 4 garage doors or gates. Each button can be programmed to Security+ and Security+ 2.0 devices.

E975M



SOLAR KIT FOR GATE OPENERS

Operate without mains power. Kit includes 40W solar panel, 2x 18Ah batteries, enclosure, mounting kit, cables and mains charger.

SOLAR-KIT

POWERFUL ADD-ONS



MERLIN WIRELESS SECURITY KEYPAD

Convenient and safe access to open and close your gate without using a remote control or key (IP55).

E850M



BOLLARD

Specifically designed for the E850M to provide easy access from within your vehicle

BOLLARD-SINGL-R



E-LOCK FOR HORIZONTAL INSTALLATION

For additional security with electric lock. Includes 2 keys.

ELOCK-R



GATE MYQ CONNECTIVITY BUNDLE

Add monitoring and control away from home. Includes myQ Gateway and The Outdoor Protector System (Safety IR Beams).

M828AU772



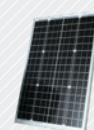
OUTDOOR PROTECTOR SYSTEM

Safety IR Beams for outdoor gate applications (IP44).

772ANZ

DUAL SOLAR KIT ADD-ONS

A second 40W Solar Panel can be added for areas with low sunlight.



40W SOLAR PANEL
SP40W



SOLAR PANEL MOUNTING KIT
SP-MOUNT-KIT



DUAL SOLAR PANEL CABLE CONNECTOR
041A0573

gomerlin.com.au ■ gomerlin.co.nz

¹ Additional purchase of Merlin myQ Gateway and Safety IR Beams accessories required to enable myQ functionality. Visit gomerlin.com.au or gomerlin.co.nz for further information. ² Safety IR Beams must be installed to enable the use of Timer-to-Close. See User Guide for additional information. ³ When compared to other available products. ⁴ The warranty period for the Solar Kit Batteries is 12 months from the date of purchase.

Swing LR 500

RURAL GATE OPENER WITH SOLAR KIT - MRGLSK-SP

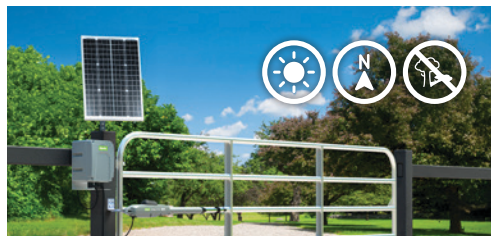


SUITABLE FOR SINGLE SWING
GATES UP TO 5 METRES



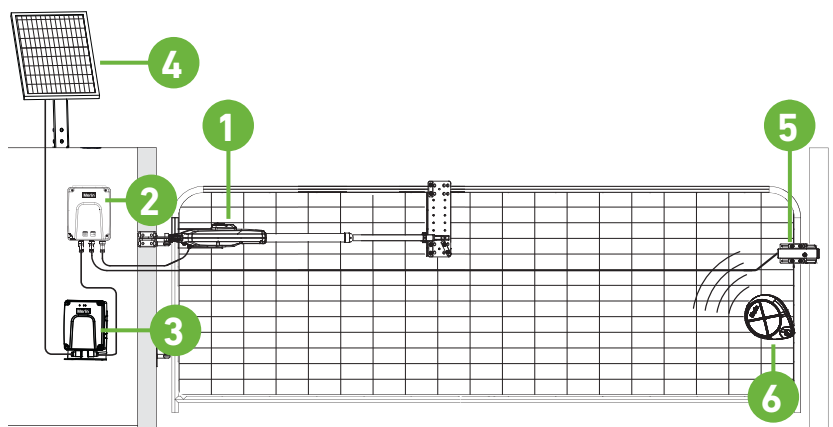
SWING GATE OPENER WITH SOLAR KIT

INSTALLATION CONSIDERATIONS



- Choose a location that faces due North and is fully exposed to sunlight. Partial shade or obstructions will significantly reduce the solar panels ability to recharge the batteries.
- An installation may require one or two solar panels depending on your application, access to solar radiation each day, cycles required each day and the connected accessories.
- During extended periods of low solar radiation, charging the Solar power supply system may be required with the AC charging adaptor.
- For full installation guidance, download the product manual from gomerlin.co.nz or gomerlin.com.au.

TYPICAL INSTALLATION - SINGLE SWING GATES



1. Gate Opener
2. Control Box
3. Solar Power Supply Enclosure
4. Solar Panel
5. E-Lock (optional accessory)
6. Remote Control (E975M)

Maximum Gate Width & Weights:

- 300kg for 3m gate
- 250kg for 4m gate
- 200kg for 5m gate.

SECURITY



SECURITY+ 2.0®

- Encrypted rolling code across multiple frequencies.
- Security+ 2.0® technology virtually eliminates interference.

SMART



SMART HOME TECHNOLOGY

- myQ compatible - monitor and control your gate opener from anywhere.⁽²⁾

EFFICIENT



GATE TRAVEL SPEED

- Opens 120° in 20-27 seconds.

STANDARD SPECIFICATIONS

- Solar Power Supply Rated Output Voltage: 21.6VDC to 35VDC
- Motor Voltage: 24 VDC
- Input Power: 50 W
- Ambient Temperature Range: -20 to +55°C
- Maximum Pull Force: 1,500 N
- Radio frequency: 433.30, 433.92, 434.54 MHz with Security+ 2.0 technology
- Compatible with myQ Technology¹
- Gate Opener Capacity of up to 64 memory registers

Merlin®



AUSTRALIA

Chamberlain Australia Pty Ltd
PO Box 1446
Lane Cove NSW 1595
Australia

gomerlin.com.au

1800 638 234

NEW ZEALAND

Chamberlain New Zealand Ltd
PO Box 100-221
North Shore, Auckland 0745
New Zealand

gomerlin.co.nz

0800 653 667

Designed & Engineered in Australia. © 2025 The Chamberlain Group LLC. All Rights Reserved. ®
Registered Trade Marks of The Chamberlain Group, Inc. ® Trade Marks of Chamberlain Group, Inc.



WARNING! Product contains coin/button cell batteries. The battery is hazardous. Keep product and batteries away from children. Battery can cause severe or fatal injuries if swallowed or placed inside any part of the body. Seek immediate medical attention if it is suspected that a coin/button cell battery has been swallowed or placed inside any part of the body.

¹This feature requires monitored Safety IR Beams to be fitted. Linking your myQ account to partner may require an additional accessory purchase or subscription fee. Apple, the Apple logo, iPhone, and iPad are trademarks of Apple Inc., registered in the U.S. and other countries and regions. App Store is a service mark of Apple Inc. Google Play and the Google Play logo are trademarks of Google LLC. Smartphone not included.

²The warranty period for the Solar Kit Batteries is 12 months from the date of purchase.