

REMOTE PRO

PROGRAMMING INSTRUCTIONS



FAAC



FAAC RC Remote



FAAC SLH Remote

PROGRAMMING REMOTE FROM ORIGINAL MASTER REMOTE



Please note that you must be within 1-2 metres from the motor to program your new remotes

1. Position working original and new remotes head-to-head
2. At the same time, press and hold buttons P1 and P2 on the original remote until the light flashes
3. Press and hold a button on the original remote that operates the door and do not let go
4. Press and hold the same button on the new remote until the light flashes and goes out
5. Wait 10 seconds for the motor to exit programming mode
6. Test your new remote

Instructional Video

Please follow the link below to view an instructional video:

<https://youtu.be/X2ffkXunXyY>

WARNING

This product may contain a coin/button cell battery. Keep product and batteries away from children. A battery can cause severe or fatal injuries in 2 hours or less if swallowed or placed inside any part of the body. Seek immediate medical attention if it is suspected that a coin/button cell battery has been swallowed or placed inside of any part of the body.

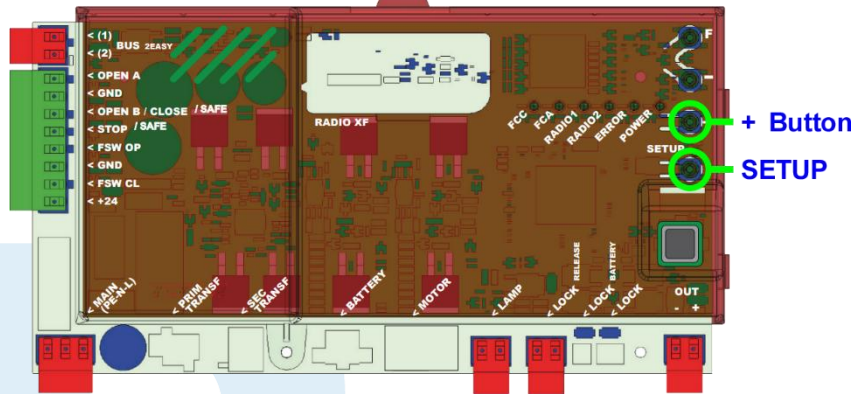
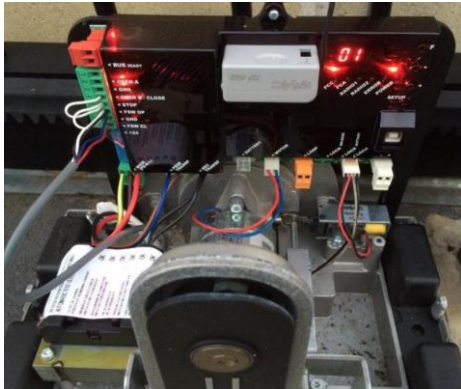


REMOTE PRO

PROGRAMMING INSTRUCTIONS



PROGRAMMING RC REMOTE TO AN E721 CONTROL BOARD

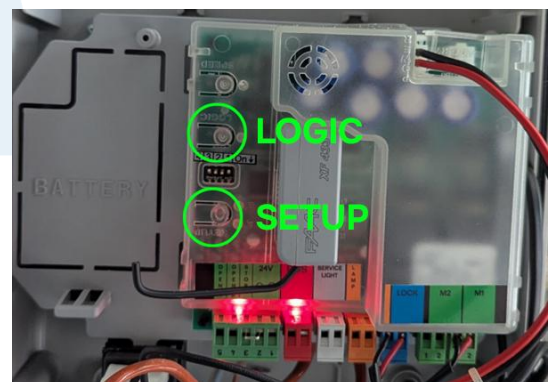


1. Press and hold the + button on the control board
2. While still holding the + button, momentarily press the SETUP button
3. Let go of both the buttons
4. Within 5 seconds, press and hold the button that you wish to program on your new remote for 2 seconds
5. Test your remote

PROGRAMMING RC REMOTE TO AN E024S CONTROL BOARD



1. Press and hold both the LOGIC and SETUP buttons on the control board and do not let go
Lights will illuminate on the board
2. Press and hold the button that you wish to program on the new remote for 3-5 seconds.
One of the lights will go out on the control board
3. Release the LOGIC and SETUP buttons and test the remote



WARNING

This product may contain a coin/button cell battery. Keep product and batteries away from children. A battery can cause severe or fatal injuries in 2 hours or less if swallowed or placed inside any part of the body. Seek immediate medical attention if it is suspected that a coin/button cell battery has been swallowed or placed inside of any part of the body.



REMOTE PRO

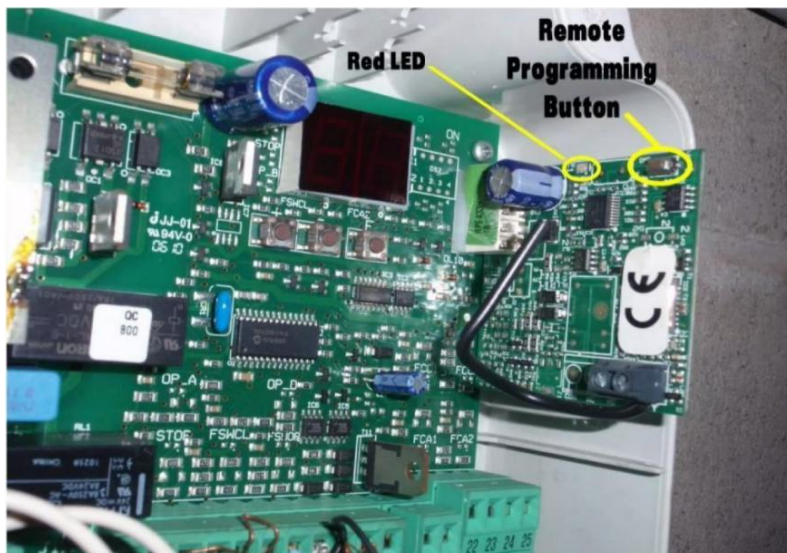
PROGRAMMING INSTRUCTIONS



PROGRAMMING RC REMOTE TO AN 455D CONTROL BOARD



1. Remove the cover from your motor to expose the control panel
2. Locate the remote programming button as displayed below



3. Push the learn button once and release. A red light will illuminate for 10 seconds
4. Press and hold the button you wish to program on your new remote for 2 seconds. The light on the receiver will flicker indicating the remote has been learnt
5. Test your new remote

PROGRAMMING RC REMOTE TO A D1000 GARAGE MOTOR



1. Press the Open A button on the motor once and immediately release
2. Within 5 seconds press and hold the button on the new remote that you would like to program to the motor for 2 seconds and let go
3. Wait 10 seconds for the flashing light on the motor to go out
4. Test the new remote



WARNING

This product may contain a coin/button cell battery. Keep product and batteries away from children. A battery can cause severe or fatal injuries in 2 hours or less if swallowed or placed inside any part of the body. Seek immediate medical attention if it is suspected that a coin/button cell battery has been swallowed or placed inside of any part of the body.

